

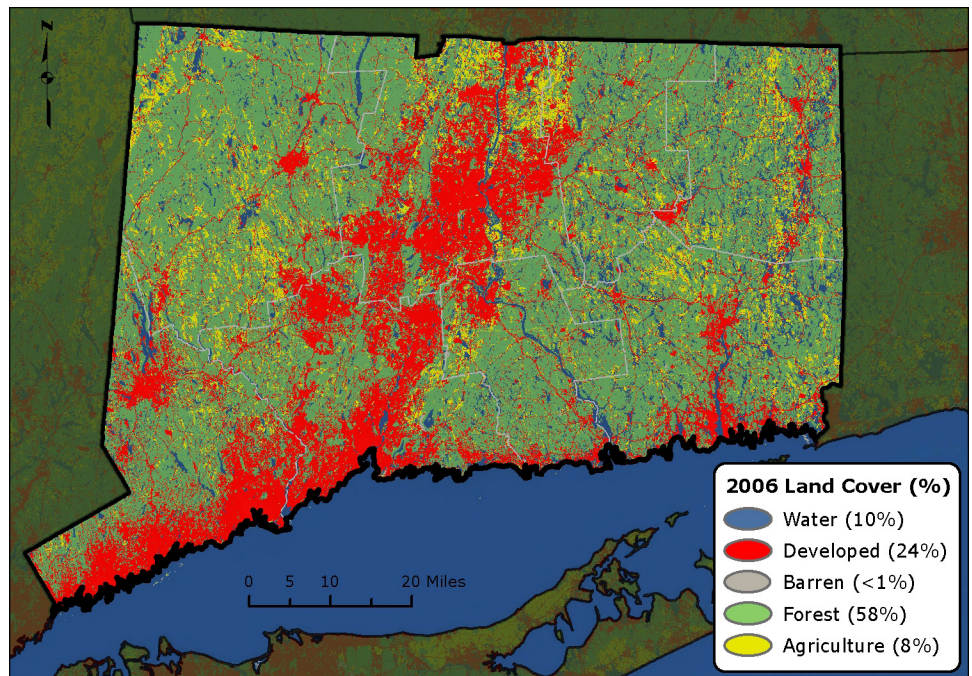
2013 Forest Health highlights

CONNECTICUT

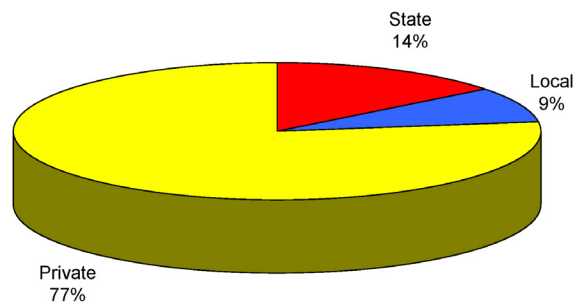


Forest Resource Summary

Connecticut's forests are 77 percent privately owned, with the remainder of the lands in State or local town ownership. These forests provide clean water and air, and wildlife habitat, and are sources of recreation, timber, and fuel. Forested parks and shade trees esthetically enhance communities, as well as provide energy savings, habitat for wildlife, and recreation opportunities. The latest Connecticut forest inventory estimates that there are approximately 1.8 million forested acres in the State. The forest resource is made up of a variety of forest types—mostly oak, maple, and other hardwoods—along with pine and eastern hemlock.



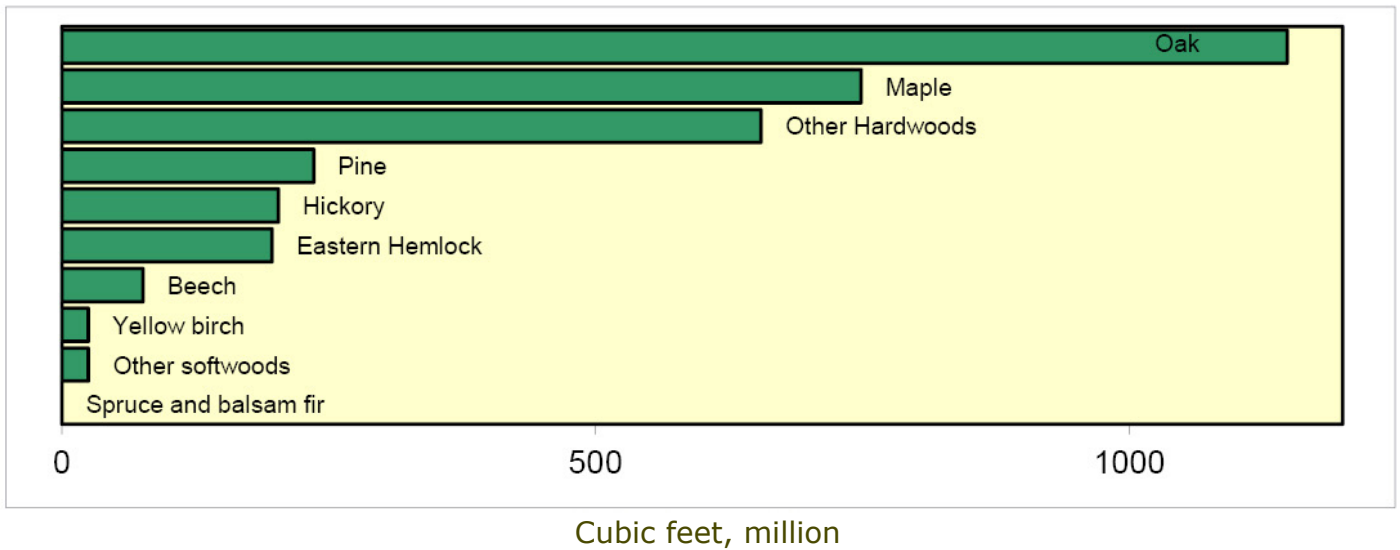
Forest Land Ownership in Connecticut, 2007



Forest Health Programs in the Northeast

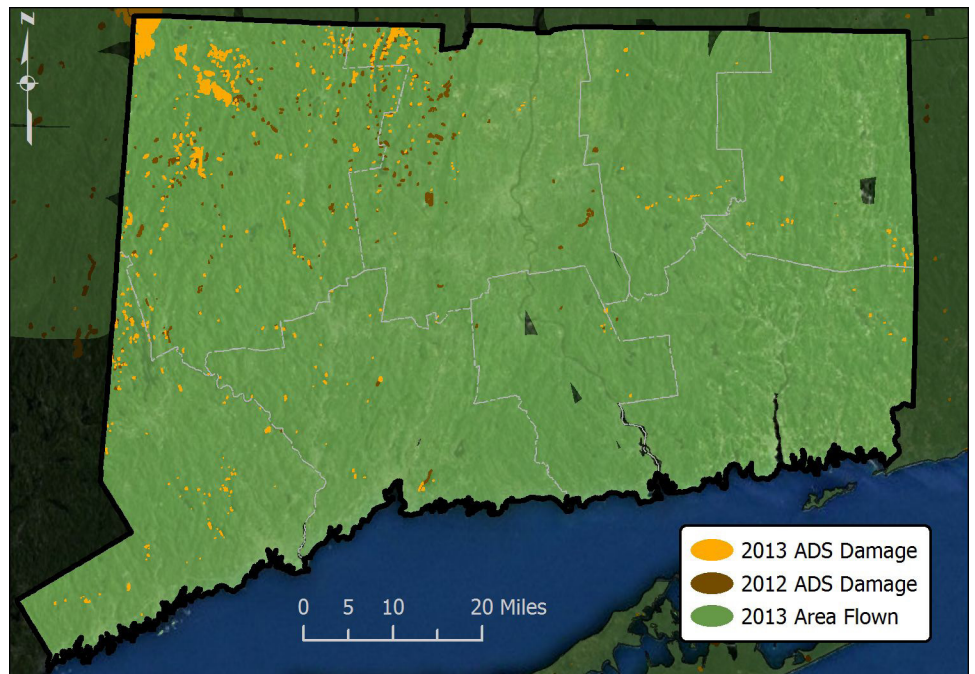
State forestry agencies work in partnership with the U.S. Forest Service to monitor forest conditions and trends in their State and respond to pest outbreaks to protect the forest resource.

Forest Species by Volume in Connecticut, 2007



Aerial Surveys

Almost 24,000 acres of damage were mapped by aerial survey in Connecticut in 2013, nearly half of which was from weather events. Hemlock woolly adelgid caused considerable damage, and anthracnose caused discoloration on over 3,200 acres. In addition, some minor damage mapped was due to locust leafminer, larch casebearer, ash rust, red pine scale, and fire.



Aerial detection survey (ADS) results for Connecticut in 2012 and 2013.

Forest Damage

Weather Events

During Superstorm Sandy (October 2012), many trees were damaged by wind and saltwater, both from flooding due to storm surge and wind-borne seawater. These trees are still showing the effects of branch breakage, loss of crowns, and general salt damage. There were 997.2 acres that showed wind damage. In addition, fire affected 14.5 acres, and hail damaged over 10,500 acres in 2013.



Hail damage, June 2013. (Photo: Peter Trenchard, The Connecticut Agricultural Experiment Station)

Insects

Emerald ash borer was found in New Haven County in July 2012 in a colony of *Cerceris* wasps. Since then, the insect has been found, both in *Cerceris* colonies and in purple traps, in Fairfield County (towns of Newtown and Sherman); Litchfield (Watertown); Hartford (Southington); and New Haven (Beacon Falls, Bethany, Cheshire, Hamden, Middlebury, Naugatuck, North Branford, Oxford, Prospect, Southbury, and Waterbury). At this writing, the actual acreage of the infestation is not known because delimitation is not yet complete. Trapping for this insect and monitoring of colonies will continue in 2014.

No observable damage due to **gypsy moth** was found in 2013. During egg mass surveys in winter 2012–2013, only a few viable egg masses were found.

No defoliation due to larval feeding of **forest tent caterpillar** or **orange-striped oakworm** was recorded in 2013. **Red pine scale**, described in Connecticut in the 1940s, causes sporadic damage. Statewide, a total of 29.0 acres was affected by red pine scale in 2013.

The following pests were not found during surveys in 2013: **Asian longhorned beetle**, **light brown apple moth**, and **Sirex wood wasp**. **Brown marmorated stink bug** causes sporadic damage to fruit crops.

The health of hemlock stands in Connecticut continues to show general recovery from **hemlock woolly adelgid**, with large areas of the northern half of the State showing excellent new growth. Hemlock woolly adelgid affected 7,657 acres statewide. In general, damage due to **elongate hemlock scale** continues to increase, especially on true firs and spruce, possibly due to mild winter conditions. **Circular scale** is found sporadically.

Pathogens

Beech bark disease is endemic statewide and is causing mortality of stressed trees.

Near coastal areas, **ash rust** affects several ash (*Fraxinus*) species including white, green, and occasionally, black ash. The alternate hosts are several species of cordgrass (*Spartina species*) and a marsh grass (*Distichlis spicata*). Generally, ash rust disfigures and defoliates trees, but it does not seriously threaten their health. Nevertheless, repeated ash rust infections may weaken ash trees near wetlands where cordgrass and marsh grass grow, making them more susceptible to winter damage and branch dieback due to opportunistic diseases. Ash rust affected about 90 acres in 2013.

Butternut canker is widespread in the butternut population and is caused by several fungi in the genus *Phomopsis*. Another pathogen, *Melanconis*, is widespread.

Due to the limited number of walnut trees in Connecticut, there is no monitoring program for **thousand cankers disease**, even though this disease is the subject of a number of newly enacted quarantine regulations for many States.

Hardwood species, especially maple, were affected by **anthracnose**, which is caused by several different foliar fungi, and anthracnose defoliated 3,244 acres.

References

Land Cover Map:

U.S. Geological Survey. 2011. 2006 National land cover dataset. Sioux Falls, SD.

Forest Land Ownership, Forest Species Type:

U.S. Department of Agriculture, Forest Service. 2009. Forest resources of the United States, 2007. Gen. Tech. Rep. WO-78. Washington, DC. 336 p.



U.S. Department of
Agriculture
Forest Service
Northeastern Area
State and Private Forestry
11 Campus Blvd., Suite 200
Newtown Square, PA 19073
<http://www.na.fs.fed.us>

Forest Health Protection
Northeastern Area
State and Private Forestry
271 Mast Rd.
Durham, NH 03824
603-868-7708



The Connecticut Agricultural
Experiment Station
123 Huntington Street
P.O. Box 1106
New Haven, CT 06504-1106
203-974-8474
<http://vww.caes.state.ct.us/>

May 2014