



HILLVALE WILDLIFE TRUST

Hillvale Wildlife Trust
Dedicated to Conserving
Nature's Legacy
Address: 23 Warbler Ln.
Hillvale, CT 06784
Phone: 203-555-2389
Email:
HillvaleWildlife@gmail.com
Website: www.HWTrust.org

February 1, 2025

To Whom It May Concern,

The Hillvale Wildlife Trust strongly advocates for the conservation of the 400-acre forest in our town, a vital habitat that supports a remarkable array of wildlife and plant species. This forest, the only large block of its kind in the area, plays a critical role in maintaining biodiversity and ecological balance.

Larger patches of habitat support a greater diversity of life, including rare and vulnerable species such as the wood thrush and the state-listed cerulean warbler, both of which have been observed within this forest. These species depend on substantial, unbroken tracts of forest for their survival.

Every piece of forest lost diminishes the chance for wildlife to thrive. There are effective ways to balance wildlife conservation with responsible use of this land. By carefully designing trails to avoid sensitive areas and preserve unbroken forest space, we can minimize the impact on wildlife while offering the community opportunities for recreation and connection with nature.

Additionally, sustainable forest management can enhance habitat diversity. Thoughtful tree harvesting creates forest openings that allow new growth of trees, shrubs, and wildflowers, which provide essential food and cover for wildlife. This approach not only sustains local biodiversity but also contributes to the economy through local forest products.

Together, we can create a balance where wildlife, ecosystems, and people coexist harmoniously.

Sincerely,

Hillvale Wildlife Trust

OUTDOOR RECREATION ORGANIZATION

Hillvale, CT

TO WHOM IT MAY CONCERN:

We are the ORO (Outdoor Recreation Organization) and we support adding a system of hiking and biking trails to the property.

Our community needs a recreational resource like this, to relax and have fun. Being in nature also improves mental and physical health, and will strengthen our community connections by providing a gathering place for all.

We would like to add these recreational resources while still preserving the forest ecosystem. Hillvale has an active community of wildlife photographers and birders who would be interested in using the property for their interests. Trails would make this possible.

SINCERELY,

ORO BOARD OF DIRECTORS





Hillvale Historical Society
554 First St.
Hillvale, CT 07432

February 4, 2025

To Whom It May Concern:

We are the Hillvale Historical Society. Our goal is the preservation, interpretation, and promotion of Hillvale's history and cultural heritage.

There is a colonial-era cemetery on site, and we would like to preserve this cemetery for a number of reasons. Colonial-era cemeteries are tangible links to the past, offering insight into the lives, beliefs, and customs of earlier generations.

Gravestones, inscriptions, and cemetery layouts reflect colonial-era craftsmanship, language, and social values. Cemeteries also provide a wealth of information for genealogists, historians, and researchers, including birth and death dates, family connections, and migration patterns. They can help reconstruct forgotten histories, especially of underrepresented groups, such as enslaved individuals, Indigenous peoples, or women. Cemeteries are a vital part of a community's identity, connecting current residents to their ancestors and shared history.

We would like this preserved cemetery to serve as an outdoor classroom, teaching students and visitors about history, culture, and even ecology. This will preserve Hillvale history and also respect the lives of the individuals buried there.

Regards,

Hannah Morales
CEO

123-456-7890
HillvaleHistoricalSociety@Hillvale.org



February 23, 2025

To Whom It May Concern,

The members of Hillvale Community Coalition express our strong interest in preserving the 400-acre wooded property that was just acquired by the city. As a vital part of our urban landscape, this property represents an invaluable resource for our community's environmental, recreational, and cultural needs.

This wooded area serves as a critical green space in our urban environment, providing essential benefits such as improving air quality, reducing urban heat island effects, and supporting local biodiversity. The property's mature trees and native vegetation create a natural habitat for wildlife, which contributes to ecological balance in our city. Protecting this space ensures these environmental benefits are preserved for future generations.

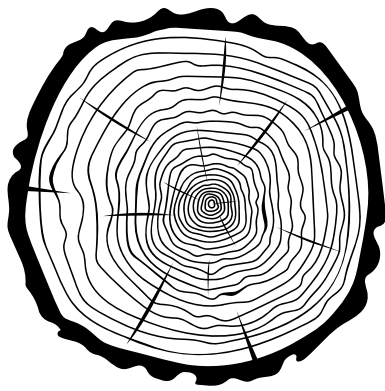
In a densely populated urban area, access to natural spaces is vital for the well-being of our residents. This wooded property offers the potential for walking trails, community gardens, and open areas where people can gather, exercise, and connect with nature. Studies consistently show that access to green spaces improves mental and physical health, making this preservation effort an investment in our community's overall quality of life.

Preserving the property aligns with our mission to foster community engagement and education. This land could become a hub for environmental education programs, where residents—especially children—can learn about local ecosystems, sustainability, and conservation practices. Additionally, it can serve as a gathering place that strengthens community bonds by hosting events and volunteer initiatives.

Regards,

Daniel Gallego

President



WOOD PRODUCTS ASSOCIATION
HILLVALE

March 2, 2025

To Whom It May Concern:

We are the Wood Products Association of Hillvale.

Hillvale and surrounding communities need ample wood products for their homes, businesses, and personal products. The ability to harvest wood from this property for milling and use in our city would reduce the carbon footprint of our wood products and support the wood-based economy.

It would provide numerous jobs for foresters, loggers, mill operators and woodworkers, which would be filled locally. Purchasing wood from a faraway place would not support our economy and would have a greater climate impact as it will need to be transported.

We propose setting aside at least 100 acres for sustainable forest management that includes timed timber harvests that will sustain the growth of future forests in the parcel.

Additional carbon will also be captured and stored (sequestered) as trees continue to grow on site. Carbon can also be stored in the form of long-lasting forest products such as lumber that are made from wood harvested from the site. This will allow for additional carbon to be sequestered if the forest is allowed to regenerate.

Regards,

Rachelle Beaudry
Coresponding Secretary



ECONOMIC DEVELOPMENT COMMITTEE

To whom it may concern,

We are the economic development committee for Hillvale. Our goal is to support economic sustainability in our city. We promote and support local businesses and economic development.

It was a disappointment when Acme Manufacturing decided to leave Hillvale. Our community lost hundreds of jobs and has lessened financial stability. The economic development committee encourages the town to use the remaining property to strengthen the economy and add jobs to our town.

Knowing the value of this land we wish to use the space for the greatest good but for the most financial reward for the region. Recreation and access to jobs is necessary to the area and opening up space for new recreational space that allows people to have income and increase tourism and revenue is important. Our historical contact with community groups and connection to community can increase diverse possibilities for youth to socialize and have safe areas to meet and relax.

We are relying on the community to have input for their ideas for increasing the capacity for this property to meet the community's needs for jobs and economic growth. This could include small business and music establishments, conference centers and meeting spaces for retreats that play on the natural aspect, low impact shops and local flavor restaurants interspersed with parks and green design.

Sincerely,

Ruby Twin



April 5, 2025

To Whom It May Concern,

We are the state Department of Public Health. Our mission is to promote health and wellness in the community through education and action. We represent the interests of medical doctors in this state.

As medical professionals, we have a number of issues of concern regarding the Acme property in Hillvale. First, the property contains a large amount of hazardous waste in the area of the abandoned factory, and the public should not be allowed to access this area. The public should also not be consuming or swimming in the water on site, and should not be exposed to the soil. The DPH sees a good opportunity to support community wellness by creating recreational opportunities on the property.

The asthma rate in the area is of concern due to the air quality issues. Local air studies have identified this location to have a high impact of health issues from particle levels, and ozone levels that are increased due to heat effect from urban setting and heat effect. The impact from climate change has increased the rate of heating, heat island effect, and the area has seen an increase of emergency room related visits above the national average. This has caused concern for the growth of development and influx of construction to this region that adds hardscape without concern for improvement to air and temperature impacts for the people already affected.

Sincerely



Dani Martinez
Doctor



ENERGY COMMISSION

Hillvale, CT

February 27, 2025

To Whom It May Concern,

The current climate provides for grants to municipalities and individuals to consider the applications for green infrastructure and energy sources that have low impact and support the switch toward electric supplies.

The Energy Commission seeks to include the application of energy conservation and introduction of green energy infrastructure into plans whenever possible. As this area is developed or planned for, the commission advises that ways to include self-powering or supportive power steps be added to help reduce demands on energy from fossil fuels and to help increase revenue or potential jobs from green energy areas. To include ways to encourage homeowners or the community to balance energy production or to include alternative planning methods that include energy scaling options and grid support ideas for the community so that it remains in control of itself and its development for resilience in the face of climate change.

We stress the use of electric powering stations, inclusion of solar collectors that can be added to reduce use of green areas and increase use of developed spaces while offering electric power sources to the grid and stabilizing power sources for future use. The municipality is encouraged to use this space in application for microgrid grant consideration should they come available applying space to the plan as needed meeting the need for the community and supporting the state assessment of advancing underserved communities for improved health and advantages for growth through energy opportunities.

Respectfully,

Charlie LaMotte

@GreenEnergyComm 

EC@hillvale.gov 

www.Hillvale.gov 

123-456-7890 